

# 36" INDUSTRIAL STYLE DUAL FUEL RANGE

Genesi series - GQY9S-4M



ALSO AVAILABLE IN



nero BA



antracite AN



ametista AA



celeste CE



bordeaux BR



crema CR



nuvola NA



sabbia SA

## FEATURES AND BENEFITS

- Powerful 17,000 BTU double ring burner speeds cooking time
- Combi-Steam to bake as you've always cooked, in shorter time, with less energy consumption, with better results
- Removable, dishwasher safe, s.steel oven liners
- Full extension telescopic rack rails for easy access to the oven cavity
- Soft closing hinges softly guide the door shut so the oven door never slams
- Our patented INNVENT system with double inverted rotation of the fans distributes heat evenly throughout the oven's cavity, not only vertically on different levels, but also horizontally on each level, allowing impeccable and homogeneous cooking. Your oven door can remain closed all the cooking time, because you won't have the need to rotate the tray halfway.
- TFT programmer. 11 cooking functions - 34 pre set recipes - eco mode - Sabbath mode - traditional and fan assisted steam functions

## MAIN OVEN PERFORMANCE

BAKE/BROIL ELEMENT WATTS	1000 + 2800 W
CONVECTION ELEMENT WATTS	2500 W
LOWER ELEMENT WATTS	1400 W
OVEN VOLUME	3.2 cubic feet

## TECHNICAL DETAILS

CIRCUIT BRAKER	15 A
VOLTS	120 / 240 V
FREQUENCY	60 Hz
POWER CORD LENGHT	46" (included)
PLUG TYPE	NEMA 50-14P - 4 prong
ENERGY SOURCE	mixed electric / gas
GAS TYPE	natural gas (5" wc)
ALTERNATIVE GAS TYPE	lp (10" wc) - LP kit included

## GENERAL PROPERTIES

OVEN FUNCTIONS	defrost, static, upper element, static steam, grill, ventilated grill, fan steam, convection, fast heating, proof
TYPE OF GRATE	enameled cast iron
KNOB/HANDLE MATERIAL	metal
INTERIOR LIGHT	3 (halogen)
KITCHEN TIMER	yes
SEALED BURNERS	yes

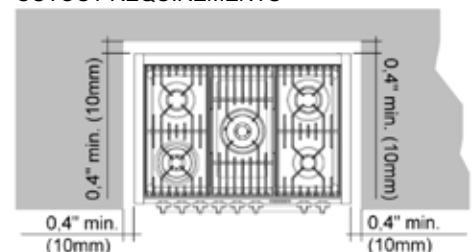
## COOK TOP PERFORMANCE

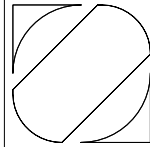
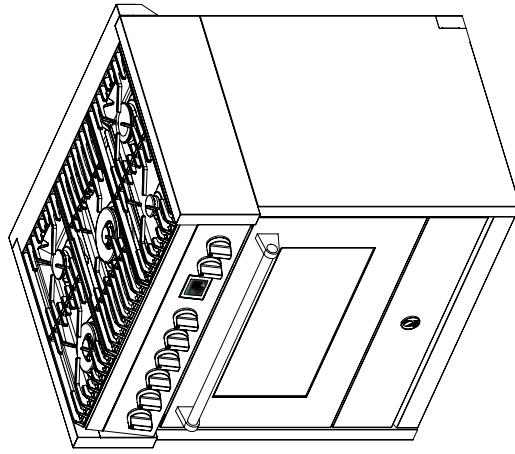
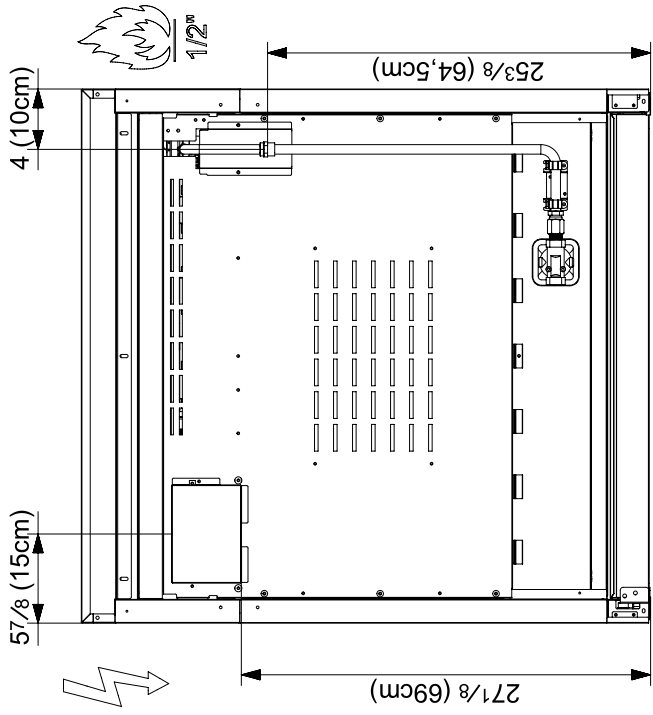
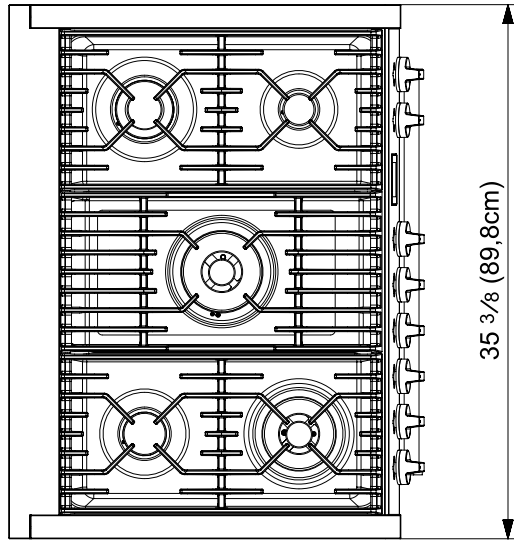
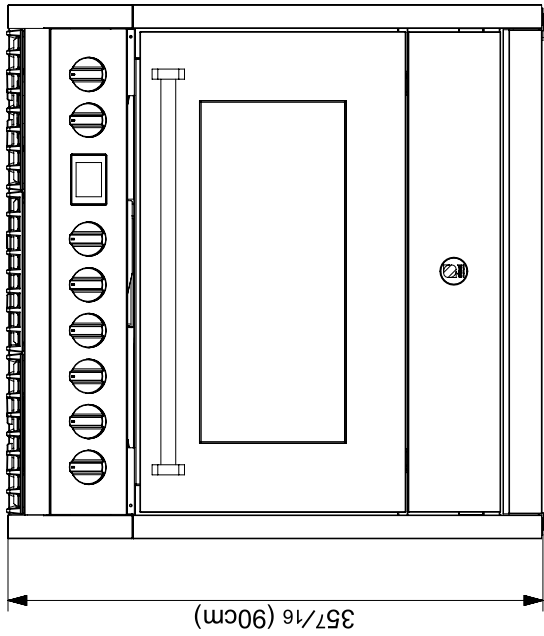
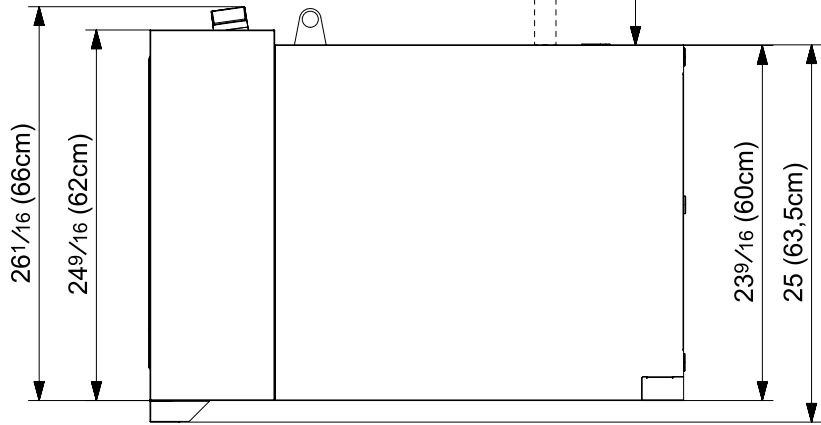
TOTAL COOKING ZONES	5
TOTAL COOK TOP (NG/LP) BTU	53700 / 41800
SIMMER (NG/LP) BTU	4200 / 3000
SEMI-RAPID (NG/LP) BTU	7500 / 5600
RAPID (NG/LP) BTU	11500 / 9500
WOK (NG/LP) BTU	13500 / 10600
MEGA-WOK (NG/LP) BTU	17000 / 13100

## DIMENSIONS & WEIGHT

OVERALL DIMENSIONS	W= 35 3/8" (89,8cm) H= 35 7/16" (90cm) D= 24 9/16" (62cm)
ADJUSTABLE RANGE HEIGHT	35 7/16" (90cm) min 36 7/32" (92cm) max
OVERALL OVEN INTERIOR SIZE	W= 23 13/16" (60,5cm) H= 13 25/32" (35cm) D= 16 59/64 (43cm)
NET WEIGHT	251lbs (114kg)

## CUTOUT REQUIREMENTS





DESCRIZIONE / DESCRIPTION  
**Cucina GNS 090 GQ9 USA**

CODE/CODE  
 MATERIAL/MATERIAL  
 TRATTAMENTO/PROCESS

RIF. CLIENTE/CUSTOMER'S RE.  
 RIF. FORNITORE/SUPPLIER'S RE.  
 DI SEGNAZIONE/EDITOR APPROV.  
**Lorenzo**  
 DATA/DATE **07/11/2023**  
 SCALA  
 MASSA/MASS kg

REV. NR.FZ.  
 \_ \_  
 \_ \_  
 \_ \_

Proprietà del lo STEEL S.p.A. CNPTI. (M.I.). Senza formale autorizzazione scritta della stessa il presente disegno non potrà essere ristampato, copiato, distribuito, modificato, né utilizzato per la produzione di altri prodotti, la proprietà va data ai propri diritti a rigore di legge.